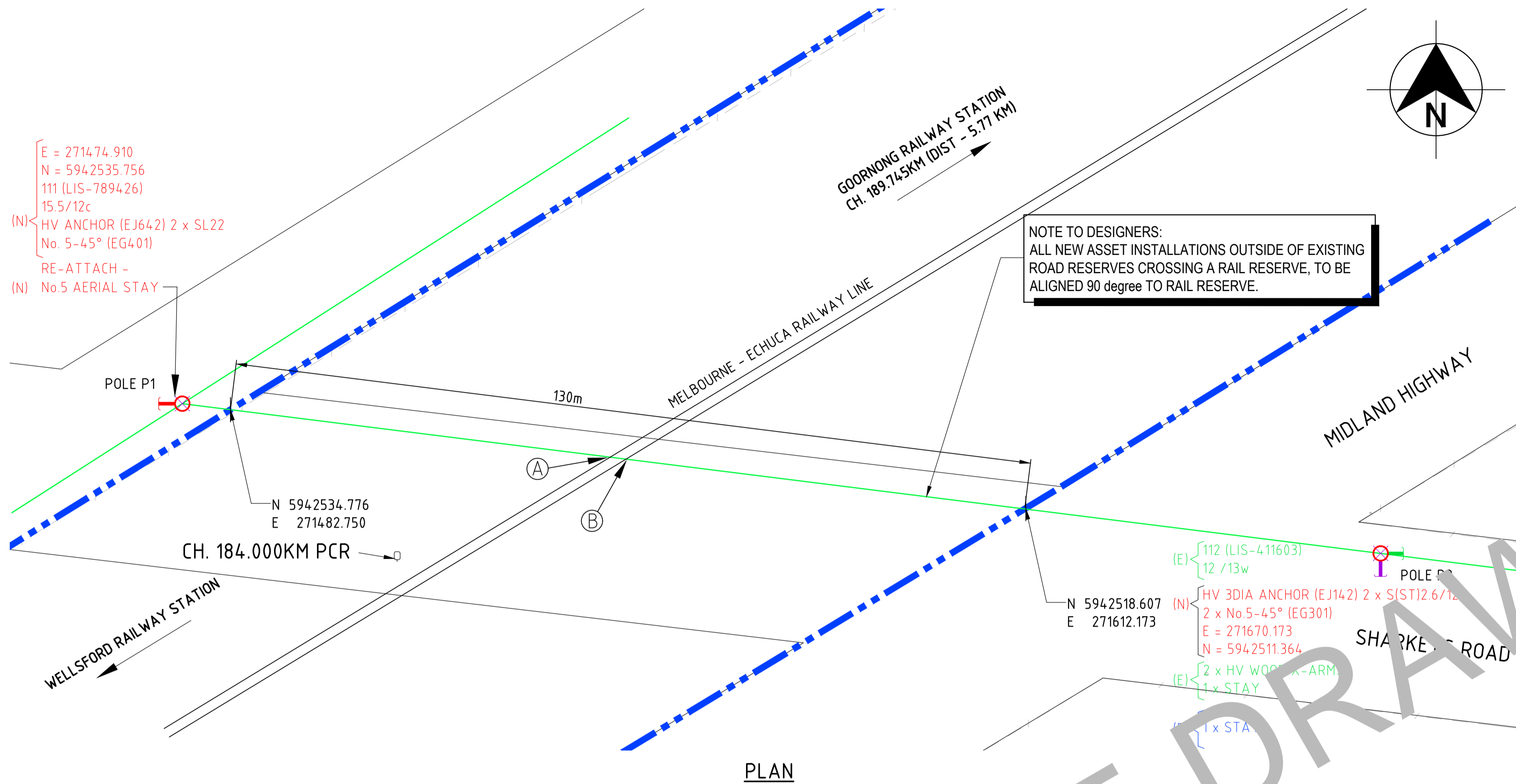
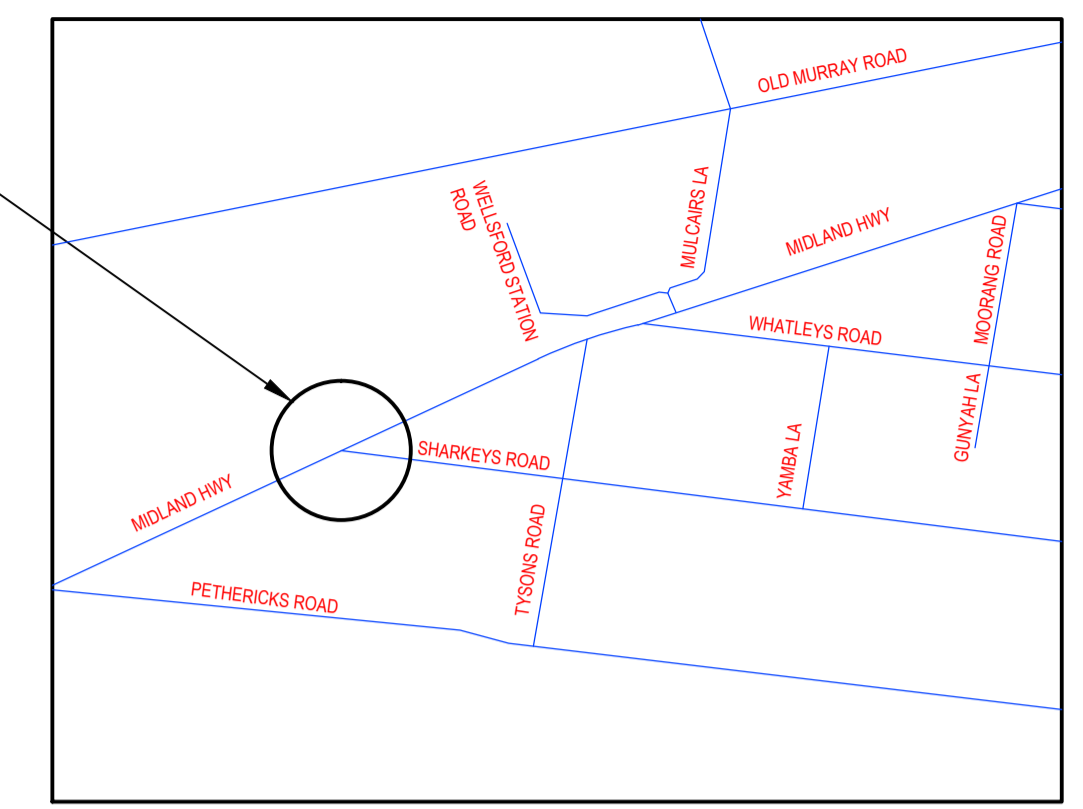


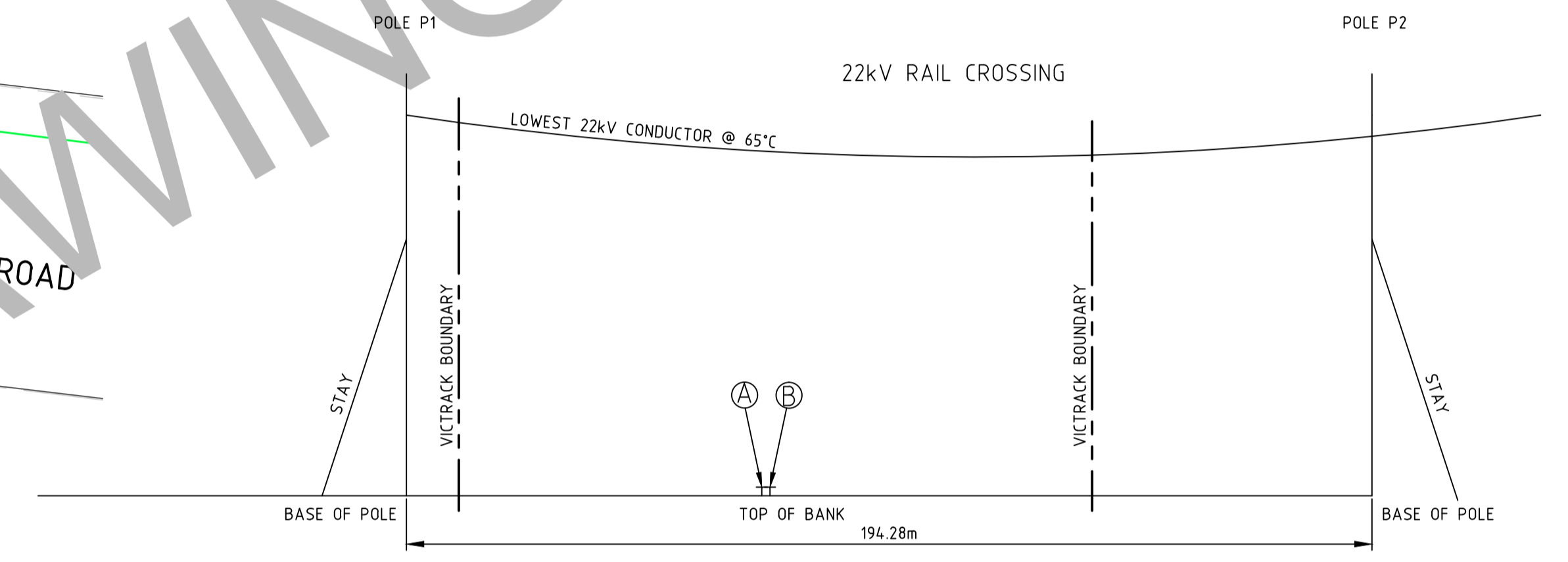
E = 271474.910
 N = 5942535.756
 111 (LIS-789426)
 15.5/12c
 (N) HV ANCHOR (EJ642) 2 x SL22
 No. 5-45° (EG401)
 RE-ATTACH -
 (N) No.5 AERIAL STAY



PLAN 1:500



SITE LOCALITY PLAN
VICROADS REF 44 J4



RL's ON ARBITRARY DATUM
NTS

LEGEND

- EXISTING POLE
- VICTRACK RAILWAY BOUNDARY
- EXISTING AERIAL CONDUIT
- EXISTING RAILWAY LINE
- PROPOSED POLE
- × RETIRE EXISTING
- ↓ PROPOSED STAY
- ↓ RETIRE STAY
- ↓ EXISTING STAY

NOTES
 THE INSTALLATION IS TO BE IN ACCORDANCE WITH THE "STANDARD CONDITIONS FOR ELECTRIC POWER OVERHEAD LINES ON OR OVER LAND VESTED IN VICTRACK".
 CROSSARMS ARE TO BE FITTED TO THE SIDE OF POLE FARTHEST AWAY FROM RAIL TRACKS.
 THE SUPERVISING OFFICER WILL BE REQUIRED TO COMPLETE THE INSPECTION REPORT PROFORMA, PROVIDED BY VICTRACK ON COMPLETION OF THE WORK.
WARNING
 NO CURRENT CARRYING CONNECTIONS ARE TO BE MADE TO THE CONDUCTORS IN THE CROSSING SPAN. i.e. MAKE CONNECTIONS TO THE CONDUCTOR TAILS.

CONDUCTOR SCHEDULE					
VOLTAGE	SERIES POLE NUMBERS	CONDUCTOR	MES	STRINGING CHART	ROUTE LENGTH
22 kV	POLE P1 - P2	3-6/1/3.75ACSR		EC271	194.28m

MINIMUM CONDUCTOR CLEARANCES		
		LOWEST 22kV CONDUCTOR AT 65°C
DESCRIPTION	POINT	CLEARANCE (m)
TOP OF RAIL - WEST SIDE	A	7.9
TOP OF RAIL - EAST SIDE	B	7.9

NOTES:
 CATENARY CLEARANCES ARE THE CLEARANCES BETWEEN THE LOWEST 22kV CONDUCTOR AT 65°C AND A STRAIGHT LINE JOINING ADJACENT CATENARY POINTS OF SUPPORT

WARNING AND DISCLAIMER
BEWARE OF UNDERGROUND SERVICES

The information provided in these drawings relating to the positions of underground services is intended to be only a guide for excavation works. (Designer's business entity) does not warrant or represent that the positions of those services shown on the drawings are accurate. Furthermore, services may exist of which (Designer's business entity) is unaware. The information provided should therefore not be relied upon and exact positions of services should be verified by hand excavation. Furthermore, (Designer's business entity) disclaims responsibility for damage or injury to any person caused directly or indirectly by any works affecting the services.



Rev.	Date	Revision Details	Drn	Ver.	App.
01	15.05.12	CONSTRUCTION ISSUE		AM	LM
				NEB	

(CONSULTANT NAME)

Client: (CLIENT NAME)

Project: (ASSET OWNER) - VICTRACK APPLICATION (REF. NO.) (LOCATION)

Drawn	Signed	Date
Designed	Signed	Date
Verified	Signed	Date
Approved	Signed	Date

Drawing Title:
PROPOSED INSTALLATION FOR ELECTRICAL 22kV AERIAL NETWORK OVER NON ELECTRIFIED RAILWAY ON MELBOURNE - ECHUCA RAIL LINE AT CH-183.975KM (LOCATION)

CONSTRUCTION ISSUE

Project No. 200649.010	
Scale 1:500	Sheet Size A1
Drawing No. STD E0093	Rev. A

