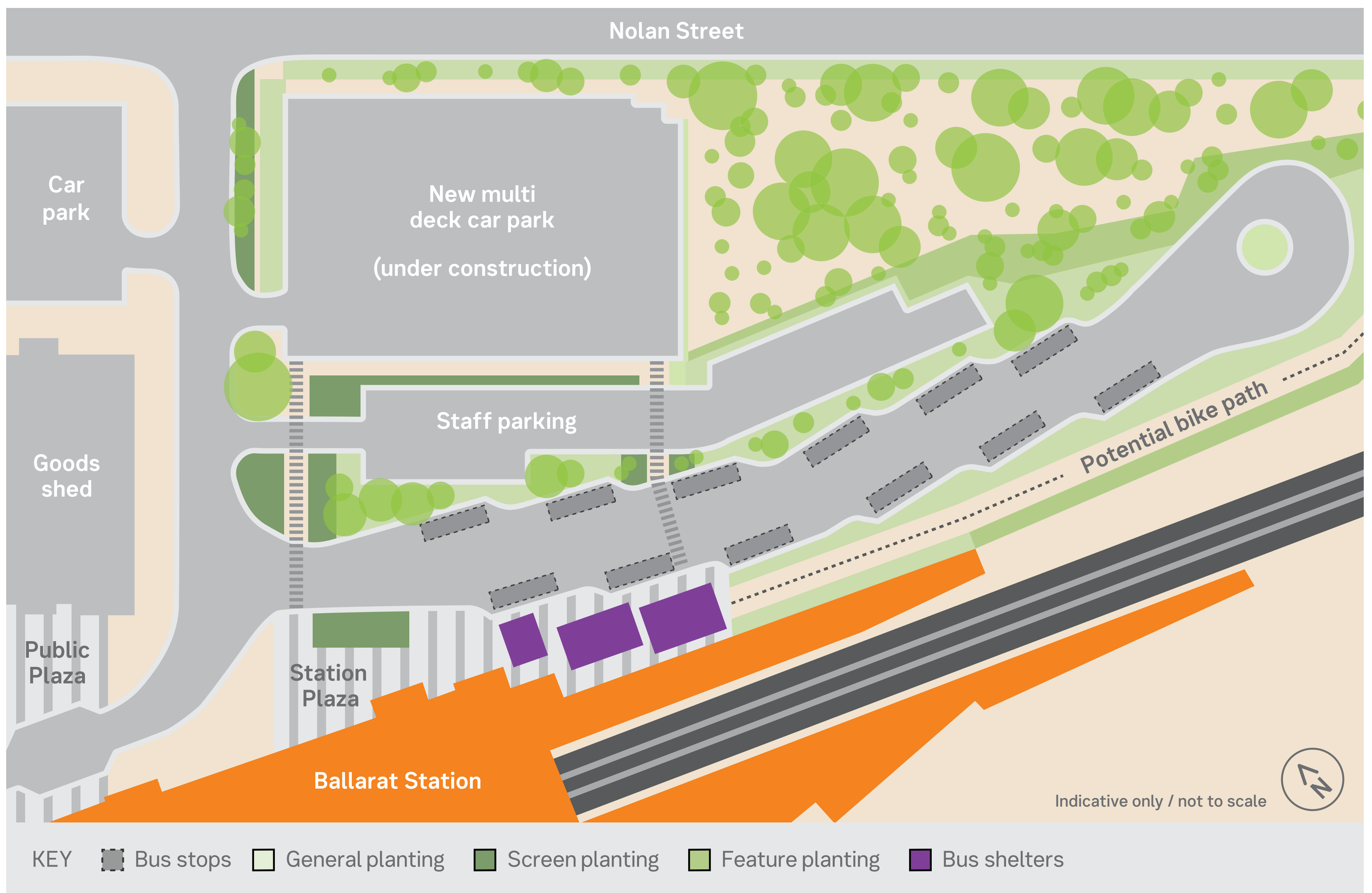


# Ballarat Station bus interchange design



**Based on feedback from the community and transport stakeholders Victrack has developed a design for the bus interchange.**

## Next steps

A permit to construct is required from Heritage Victoria with construction expected to commence in September 2018

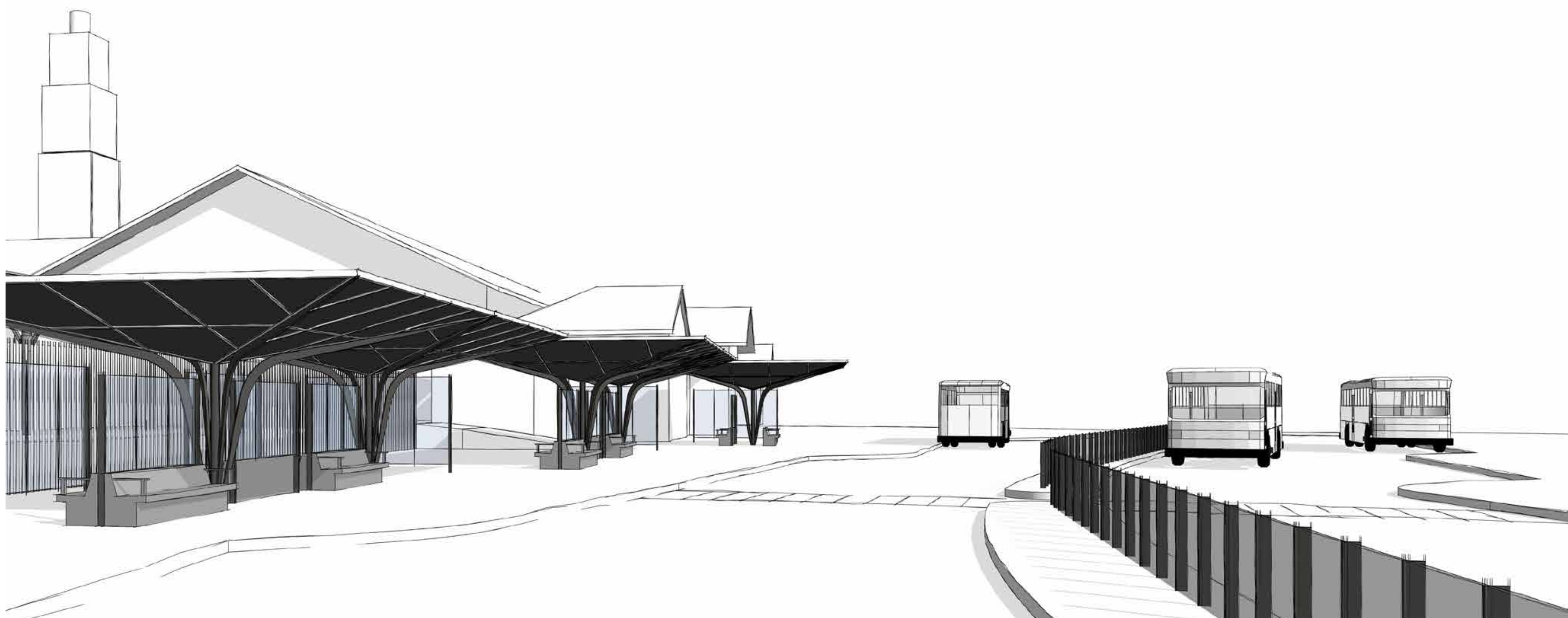
## Key features

- 12 new bus bays for local buses
- Passenger shelters for weather protection
- Heritage sensitive design
- Lighting and CCTV
- Pedestrian crossings for safer access to the car park and station entrance
- Improved landscaping to tie into the broader precinct redevelopment
- Improved way finding and connection through the precinct

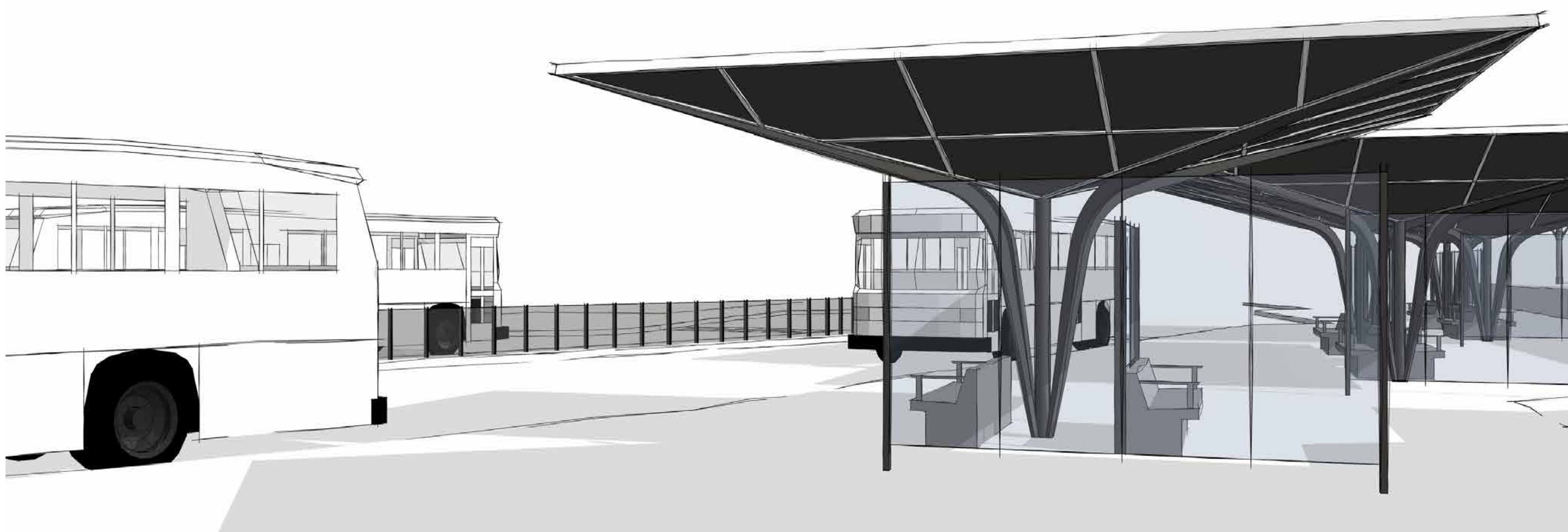
Learn more about the concept design at [victrack.com.au/ballaratbusinterchange](http://victrack.com.au/ballaratbusinterchange)



# Ballarat Station bus interchange design



Bus interchange looking west towards Lydiard Street



Bus interchange looking east