

RailMap Aerial Imagery Printing

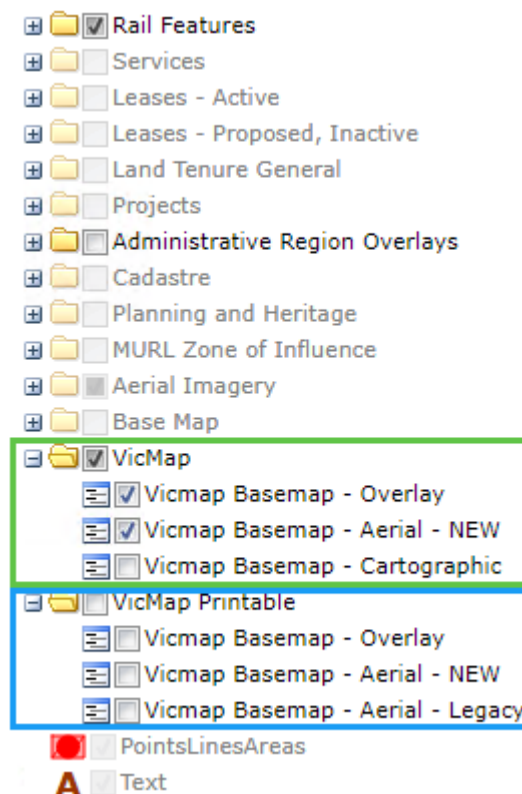
There is an ongoing issue that is preventing RailMap from printing layers from the Aerial Imagery, Overlay and Cartographic layers.

To enable printing from these layers, we have added an additional folder called **VicMap Printable** to the RailMap legend.

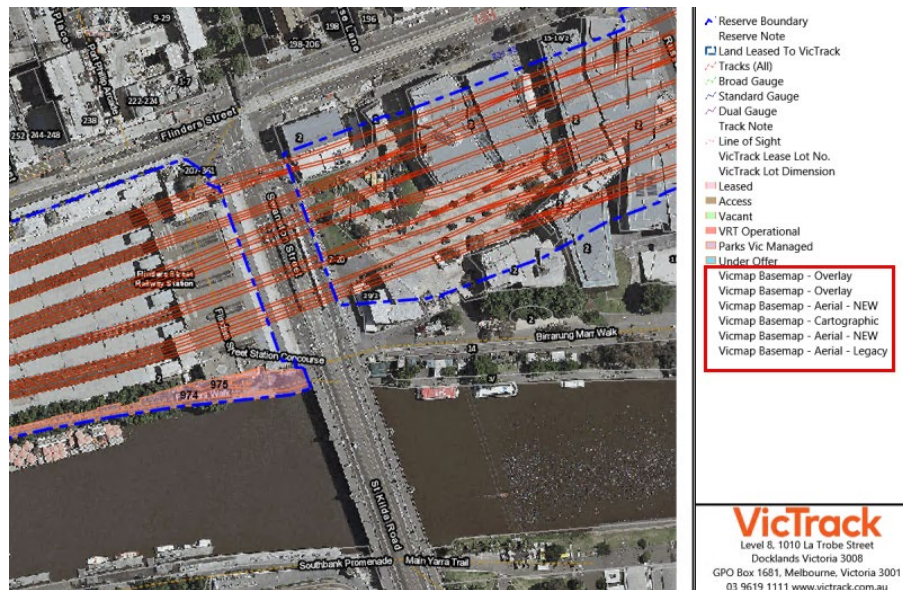
The **VicMap** folder is on by default. It contains optimised imagery and base maps layers, providing best performance. We recommend using this folder for general use and viewing of RailMap.

The newly added **VicMap Printable** folder layers are large static image files. They are compatible with the RailMap printing function, but result in significantly longer load times.

We therefore advise users to only turn the **VicMap Printable** folder on after they have navigated to an area of interest and are ready to print.



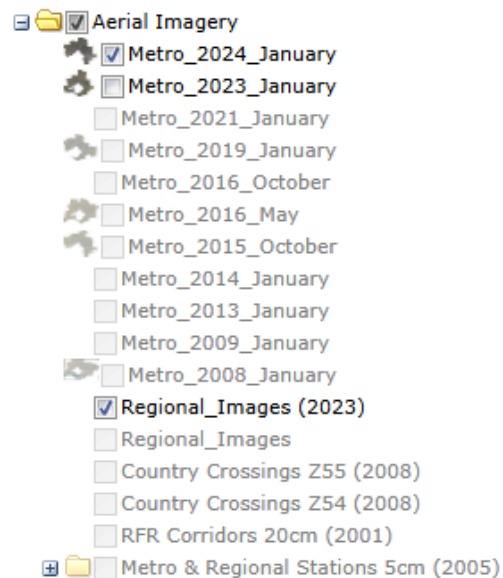
You can turn the **VicMap** folder off if you don't want all the layer names to appear in the legend.



Aerial Imagery




The **Aerial Imagery** will turn on/off at different scales and only turns on if imagery is available in the area.



Select on/off as needed to choose the preferred image for your plan.



VicMap and VicMap Printable layers

The table below provides further details about the layers within the **VicMap** and **VicMap Printable** folders.

VicMap	
VicMap Basemap - Overlay <ul style="list-style-type: none"> Provides cadastre, road and place labels over aerial imagery - updated weekly 	
VicMap Basemap - Aerial - NEW <ul style="list-style-type: none"> Satellite imagery - updated annually 	
VicMap Basemap - Cartographic <ul style="list-style-type: none"> A basic colour map - updated weekly 	

VicMap Printable	
VicMap Basemap - Overlay <ul style="list-style-type: none"> Provides cadastre, road and place labels over aerial imagery - updated weekly 	
VicMap Basemap - Aerial - NEW <ul style="list-style-type: none"> Satellite imagery - updated annually 	
VicMap Basemap - Aerial - Legacy <ul style="list-style-type: none"> Satellite imagery - pre-2003 	